

EZflow DRAINAGE SYSTEMS by INFILTRATOR



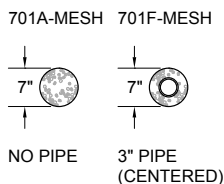
EZflow by Infiltrator gravelless drainage system utilizes the time-proven principle used in gravel systems for drainage while eliminating the problems inherent with gravel. Our **EZflow** drainage system consists of a flexible pipe with slotted holes, surrounded by our polystyrene aggregate, then enclosed in woven geotextile mesh. These products will reduce your time and expense of installation. The bundles are pre-assembled in 10-foot sections and are available in diameters of 7, 10 and 15 inches. **EZflow** drainage can be used in a variety of different systems including French or Curtain Drains, Landscape Drains, Foundation Drains, Retaining Wall Drains, and Interceptor Drains.

Compared with gravel drainage systems, benefits include:

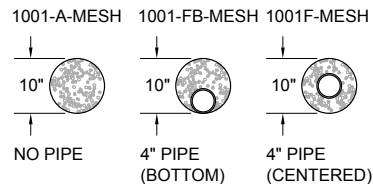
- Pre-assembled 10-foot sections allow for quick and easy installation
- Bundles can be installed by a single worker, saving costs on heavy machinery and labor
- Engineered 30 sieve geotextile netting provides the necessary filtering of soil particles to prevent clogging
- Easy to handle 10-foot bundle only weighs about 8 pounds
- Modular design can be adapted to meet any design parameter
- Ability to contour along sloped sites and around trees or landscaping
- Over 50% void area for greater water movement
- Will not crush, degrade or breakdown
- A wide variety of diameters and configurations to meet any drainage professional's needs
- Easier cleanup at the job site with the elimination of stone
- Manufactured from recycled materials rather than a mined natural resource

Product Sizes: Available in 7", 10" and 15" diameter bundles.

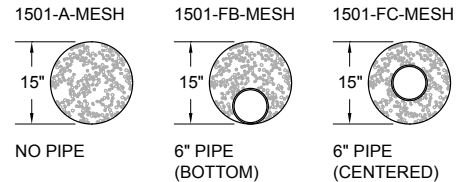
7-inch Bundles



10-inch Bundles



15-inch Bundles



Note: 10" and 15" available in center or bottom pipe location options.

Drainage Accessories Include:

3" and 4" Internal Couplers, 3" and 4" Internal End Caps, 3" and 4" Internal Tees, and 3" and 4" Internal Wyes



For technical assistance, installation instructions or customer service, call Infiltrator Water Technologies at 800.689.7759.

EZflow DRAINAGE SYSTEMS by INFILTRATOR

EZflow Drainage Systems are ideal for the following applications:

Landscape Drains

EZflow drainage systems are ideal for the prevention of excessive water in and around landscaped areas or gardens. The light-weight bundles can be installed quickly with limited site disruption compared to traditional stone and pipe systems which can be messy and destroy vegetation.



Landscape Drain

Interceptor Drains

Interceptor drains are used to intercept groundwater that collects on an impermeable layer of soil to prevent erosion. Since interceptor drains are typically installed on a sloping piece of property, getting heavy machinery and materials close to the job site can be difficult and potentially dangerous. **EZflow** drainage systems can be carried and installed by hand in just minutes without the use of stone or heavy machinery.



Foundation Drain

Foundation Drains

Foundation drains are installed at the base of a foundation to divert water away from a home. Water can gather and permeate through a foundation leading to basement flooding. **EZflow** units can be used individually or stacked as a foundation drain replacing stone and pipe.



Retaining Wall Drain

French Drains or Curtain Drains

French drains are used to eliminate excess water from low points and other areas prone to saturation on a property. Large French drains are often installed in a herringbone pattern diverting water to a downstream outlet. **EZflow** drainage systems can be used as a replacement to stone and pipe in a French drain.

Retaining Wall Drains

Retaining wall drains are used to relieve pressure that water can exert on a wall. Eliminating the risks associated with backfilling a wall during construction, **EZflow** drainage systems are a perfect solution. Bundles can be placed at the bottom or stacked to redirect the water away from the wall.

EZflow Geotextile Cover Specifications

Mechanical Properties	Test Method	Unit	Average Value Geotextile Mesh
Apparent Opening Size (AOS)	ASTM D 4751	mm (US sieve)	0.580 (40-30)
Percent Opening Area		%	16
Permittivity	ASTM D 4491	sec-1	4.29
Permeability	ASTM D 4491	cm/sec	0.24
Flow Rate	ASTM D 4491	gpm/ft ²	321

Product Compression Under Load

% Strain and Displacement vs. Load for a 10" diameter bundle containing 4" inner pipe suspended in ASTM C33 Sand



INFILTRATOR WATER TECHNOLOGIES STANDARD LIMITED WARRANTY

(a) The structural integrity of each EZflow by Infiltrator expanded polystyrene drainage system and other accessories manufactured by EZflow by Infiltrator ("Units"), when installed and operated in a drainage system in accordance with Infiltrator's instructions, is warranted to the original purchaser ("Holder") against defective materials and workmanship for one year from the date that the septic permit is issued for the septic system containing the Units; provided, however, that if a permit for a specified system is not required by applicable law, the warranty period will begin upon the date that installation of the drainage system commences. To exercise its warranty rights, Holder must notify Infiltrator in writing at its Corporate Headquarters in Old Saybrook, Connecticut within fifteen (15) days of the alleged defect. Infiltrator will supply replacement Units for Units determined by EZflow by Infiltrator to be covered by this Limited Warranty. EZflow by Infiltrator's liability specifically excludes the cost of removal and/or installation of the Units.

(b) THE LIMITED WARRANTY AND REMEDIES IN SUBPARAGRAPH (a) ARE EXCLUSIVE. THERE ARE NO OTHER WARRANTIES WITH RESPECT TO THE UNITS, INCLUDING NO IMPLIED WARRANTIES OF MERCHANTABILITY OR FITNESS FOR A PARTICULAR PURPOSE.

(c) This Limited Warranty shall be void if any part of the EZflow system is manufactured by anyone other than EZflow by Infiltrator. The Limited Warranty does not extend to incidental, consequential, special or indirect damages. Infiltrator shall not be liable for penalties or liquidated damages, including loss of production and profits, labor and materials, overhead costs, or other losses or expenses incurred by the Holder or any third party. Specifically excluded from Limited Warranty coverage are damage to the Units due to ordinary wear and tear, alteration, accident, misuse, abuse or neglect of the Units; the Units being subjected to vehicle traffic or other conditions which are not permitted by the installation instructions; failure to maintain the minimum ground covers set forth in the installation instructions; the placement of improper materials into the system containing the Units; failure of the Units or the septic system due to improper siting or improper sizing, excessive water usage, improper grease disposal, or improper operation; or any other event not caused by Infiltrator. This Limited Warranty shall be void if the Holder fails to comply with all of the terms set forth in this Limited Warranty. Further, in no event shall Infiltrator be responsible for any loss or damage to the Holder, the Units, or any third party resulting from installation or shipment, or from any product liability claims of Holder or any third party. For this Limited Warranty to apply, the Units must be installed in accordance with all site conditions required by state and local codes; all other applicable laws; and Infiltrator's installation instructions.

(d) No representative of Infiltrator has the authority to change or extend this Limited Warranty. No warranty applies to any party other than the original Holder.

The above represents the Standard Limited Warranty offered by Infiltrator. A limited number of states and counties have different warranty requirements. Any purchaser of Units should contact Infiltrator's Corporate Headquarters in Old Saybrook, Connecticut, prior to such purchase, to obtain a copy of the applicable warranty, and should carefully read that warranty prior to the purchase of Units.



INFILTRATOR®
water technologies

6 Business Park Road • P.O. Box 768
Old Saybrook, CT 06475
860.577.7000 • FAX 860.577.7001

800.689.7759

www.ezflowlp.com

www.infiltratorwater.com

For technical assistance, installation instructions or customer service, call Infiltrator Water Technologies at 800.689.7759.